

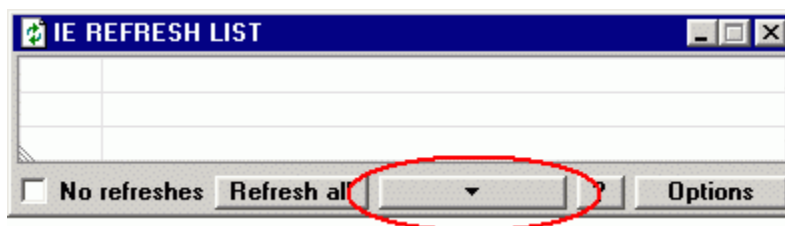
RefreshIE version 2.1

© Ian Sharpe 2002–2009 www.iansharpe.com

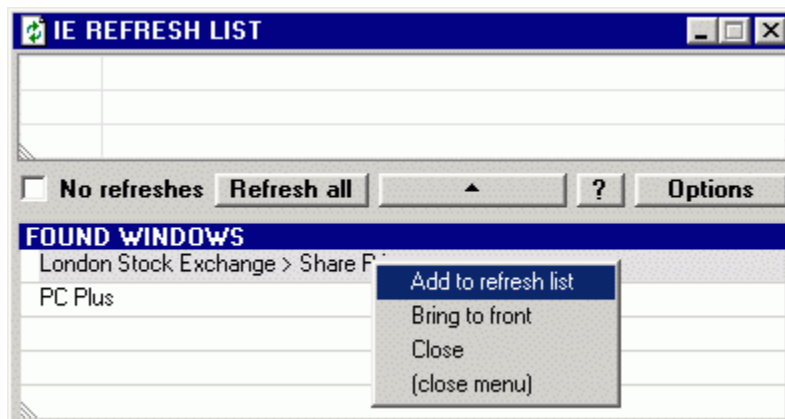
The program is free to use but is not in the public domain. The author reserves distribution rights. RefreshIE comes with no warranty. There are no known major defects, but the author accepts no responsibility for the consequences of using the software. It is your responsibility to test that it works properly on your system and behaves as you expect.

RefreshIE automatically reloads a Web page into Internet Explorer at regular intervals, as if you were hitting the Refresh button.

The refresh list shows the titles of windows the program is managing. This list will be empty when you first start RefreshIE:



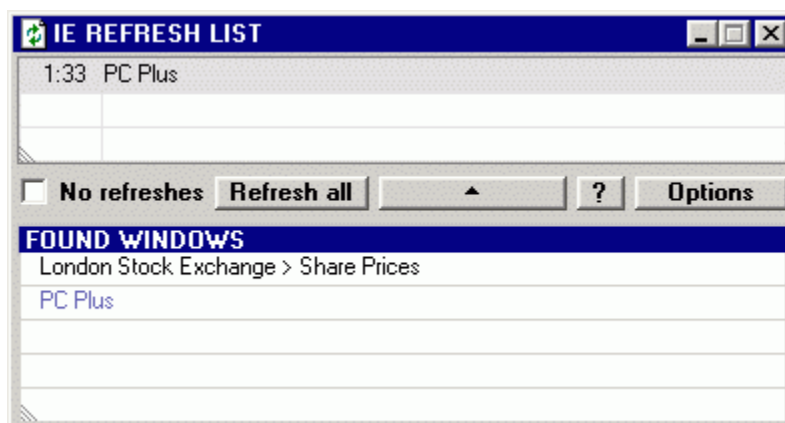
Click the down-arrow button and the list of found windows is revealed, showing running copies of Internet Explorer:



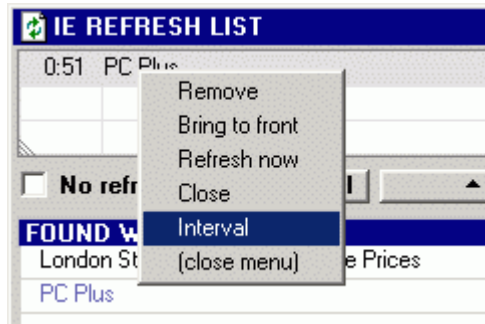
Click an item once to open its menu. Select **Add to refresh list** to place the window on the refresh list. Note the other options:

Bring to front brings the selected window to the foreground.

Close shuts that copy of Internet Explorer.



Here, the window entitled *PC Plus* has been placed on the refresh list. It remains in the found windows list because it is still running, but the paler text indicates that it already has an entry in the refresh list.



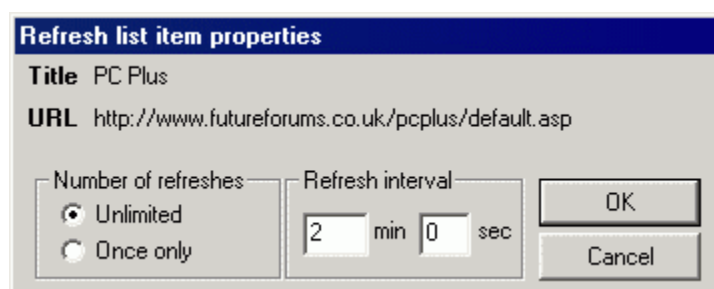
On the left of a refresh list item is a countdown (minutes and seconds) showing the time until the next page reload. Click an item to open its menu:

Remove takes it off the refresh list.

Bring to front and **Close** work as before.

Refresh now forces an instant refresh.

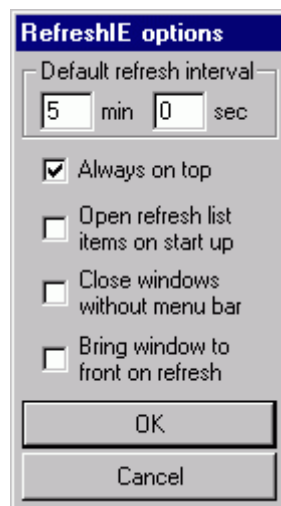
Interval enables you to change settings for this item:



Unlimited is the default setting under **Number of refreshes**. Pages will reload at the specified interval until you stop the program. Selecting **Once only** means that the page will reload after the specified interval and no further reloads will take place.

Click OK to accept changes or Cancel to discard them.

The next grab shows the dialog opened by pressing the **Options** button:



Items newly added to the refresh list are given a default refresh interval. You can change the default here and it must be five seconds or more. Note that changing this setting does not affect items already in the refresh list, only ones added thereafter.

Tick **Open refresh list items on start-up** to specify that when RefreshIE is started, any pages on the refresh list not already open will be opened automatically.

Ticking **Always on top** causes the RefreshIE window to always sit in front of other windows, even if you bring them to the front.

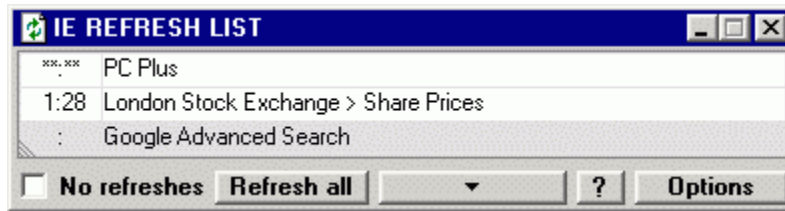
Close windows without menu bar is a rudimentary pop-up ad killer. With this setting enabled, RefreshIE automatically closes any IE window that lacks a menu bar. Many pop-up ads do not have one. Some do, and of course some wanted pop-up windows do not.

Bring window to front on refresh causes a newly refreshed IE window to be brought to the front.

Click OK to accept changes or Cancel to discard them.

► Other features of Refresh List items

This shot illustrates more features of the refresh list:



You will notice that the countdown for the first item is shown as *****.***** meaning that the window was set to refresh once only and this has now happened.

The second item is shown to be active because the countdown is displayed and there is a corresponding (pale) entry in the Found Windows list (currently hidden).

An empty countdown indicates that no open copy of Internet Explorer is displaying this page.

If you want to open the page in a new copy of Internet Explorer, click the item and select **Open**.

The grip on the lower left of the list enables you to resize it (1 – 10 rows). The Found Windows pane has a similar feature.

No refreshes suspends page reloads for all items.

Refresh all forces an instant refresh on all active entries.

► The system tray icon

Don't miss the RefreshIE icon in the system tray (far right of the Windows task bar).



Left-click to toggle RefreshIE between maximised and minimised.

Right-click to see a menu.

Hover the mouse pointer over it to see the amount of time until the next refresh is due and the title of the window to which it will apply. Note that the displayed time does not update until you take the pointer away and move it back on to the icon. Only one title will be shown even if several windows will be refreshed at the same moment.

► Internet Explorer tabs (IE version 7 and later)

RefreshIE was developed for versions of Internet Explorer before IE7, in which tabs were introduced.

No changes have been made to RefreshIE to accommodate tabs, but the program does work with IE7.

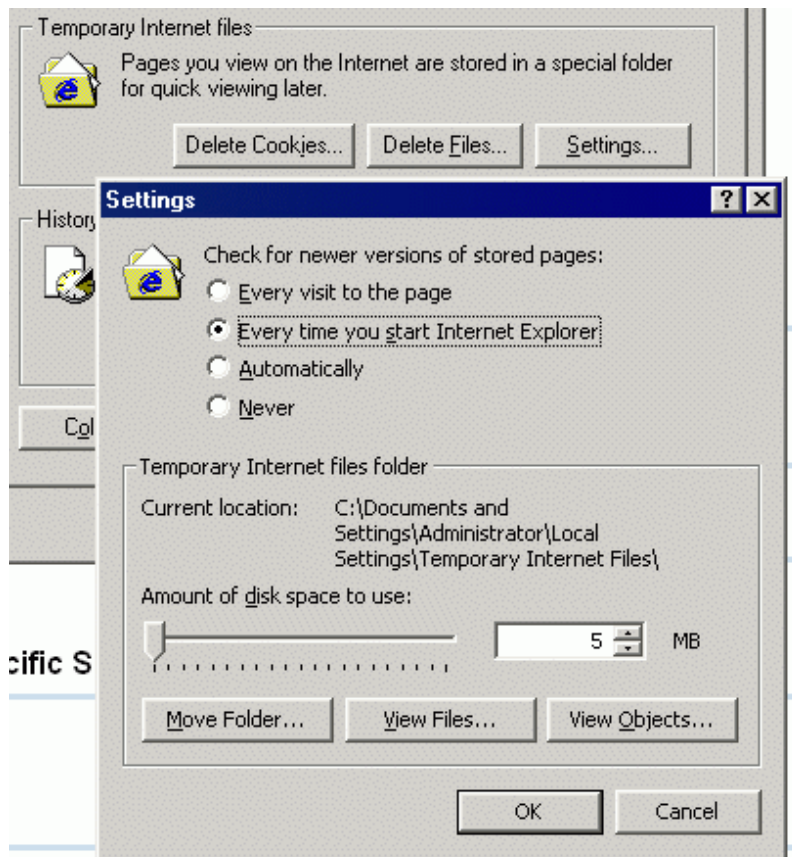
The only limitation is that RefreshIE can only target one tab per running copy of IE. So if you want to refresh multiple pages, you need to open them in individual copies of IE.

I may in future adapt the program to work better with tabs.

► Pages don't reload properly?

If you find that refreshing a page does not bring up the latest content, it is probably being taken from cache rather than freshly served from the Web site.

RefreshIE tries to make Internet Explorer load a new copy of the page but the cache settings may prevent it happening. In Internet Explorer, go to Tools / Internet Options / General. Under 'Temporary Internet Files' there is a Settings button that leads to the dialog shown on the next page:



Every visit to the page should force a full page refresh in every case. You may find the next option works also. The result will partly depend on the cache size and the nature of the page.

► Further information

When you close RefreshIE, it saves settings such as the contents of the refresh list and the state of options and list sizes. These are stored in the file 'RefreshIESettings' in RefreshIE's home folder. Settings will be read when you next start the program.

If you navigate to another page in a copy of Internet Explorer being managed by RefreshIE, the link between the refresh list item and that copy of IE is broken. No further refreshes will take place in that window. If you navigate back to the page being monitored, RefreshIE will remake the link and automatic refreshes will continue.

There will be other occasions when an entry in the refresh list has no running copy of Internet Explorer to look after. RefreshIE constantly looks for running copies of IE to match up with inactive refresh list entries. Links are made when the window title and URL are the same as the refresh list entry, but no other entry is already managing that window.

RefreshIE can only monitor a page whose URL begins with "http". This is deliberate and avoids having to work round problems with Internet Explorer windows that do not contain HTML documents.

► Removal of RefreshIE

To uninstall RefreshIE, use its entry in Add/Remove Programs in Control Panel.